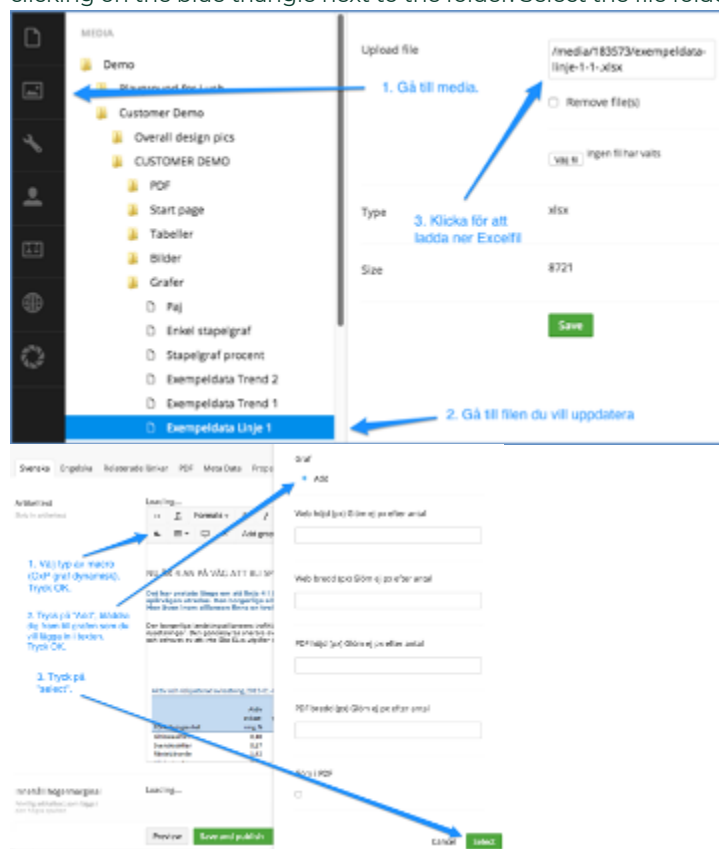


Update or change data in an existing graph

1. Go to the media library.
2. Click on that link to download the Excel file.
3. Navigate to the file you want to update (ie the Excel file associated with your graph). You expand a folder by clicking on the blue triangle next to the folder. Select the file folder to be updated.




4. Enter new numbers and possibly new text in the excel file, save the file in a place where you know you can find it.
5. Go back to the media library, make sure you are in the correct folder
6. Click "choose file", locate the file you just updated,
7. Save.

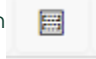
Now you can go to the preview and update. The graph should now be updated with your new data.

Resize existing graph

To resize the graph:

1. Go into content, find the page where the graph is embedded in the text.
2. Click once on the graph to be modified. (The graph is a box marked with a yellow frame and with the text Graph image.)
3. Then click the macro button. 
4. In the box that appears, you can enter the desired pixel sizes for the graph.
5. When you are happy with the change, press "Save and preview" to preview. If it looks good, you can press "Save and publish".

Place two graphs next to each other

1. Insert a graph table in content (with the insert graph table button 
2. Insert a graph macro into each cell of the table.
3. Right-click on the table, reduce the width and height of the table to zero.
4. Save and publish. The two graph images thus appear parallel to each other.

Change max/minimum value and tick interval on graphs

1. Go to the graph to be modified.
2. Click on Y-axis
3. Enter values for the graph.

Graf

Swedish (Sweden)

Content

Info

Content Guard

Actions

Overall settings

Size Settings

Graph title

Data labels

Y-axis

Legend box

X-axis

Advanced

Max value for the Y-axis

Shared

300

Min value for the Y-axis

100

Tick Interval

50

Y-axis title - font color

Standard: #000000
(html color code)

Y-axis title - font family

Y-axis title - font size

Example: 8px

Y-axis title - vertical alignment

Standard: middle

Skriv in värden för grafen

NEXT

